

TECHNOTE [07/2014]

DATE: July, 2015
AUTHOR: cardPresso TECHNICAL SUPPORT
PRODUCT/AREA: License and Security

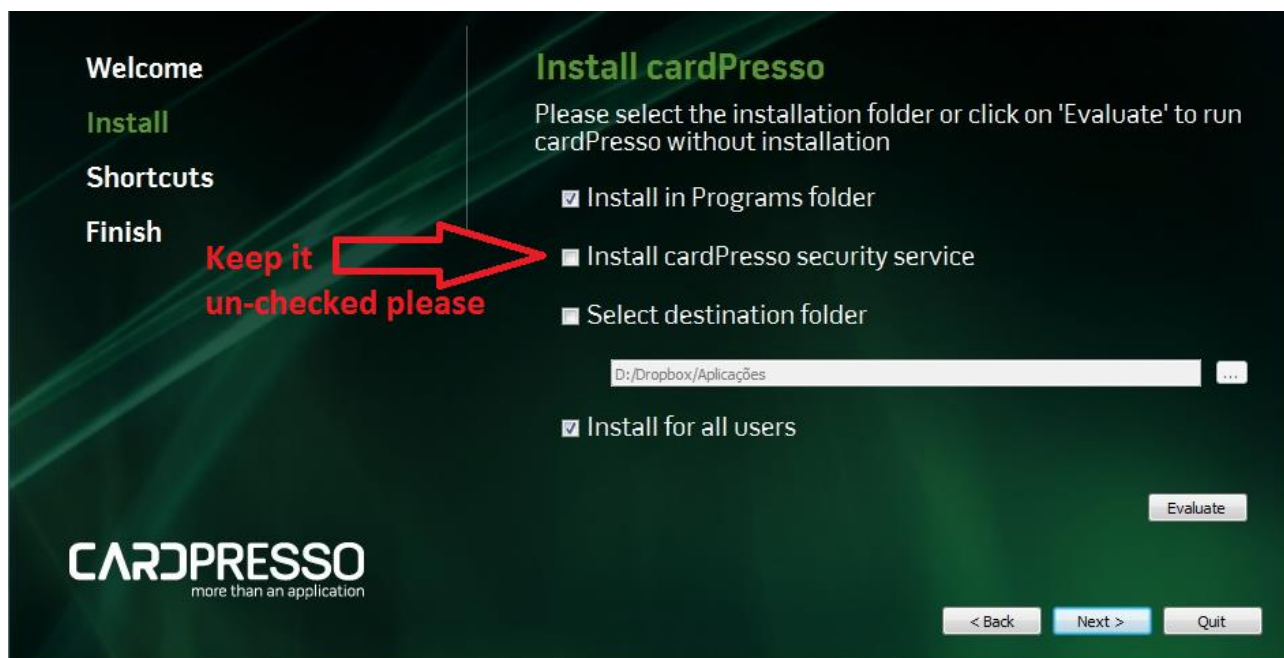
Subject: Net License Service Server

The Net License service allows 16 computers to run cardPresso XXL edition with a single USB pen. The pen is connected to a computer designated as Server and the 15 other computers are designated as Clients, although from a Network Administration perspective all 16 computers are just regular clients.

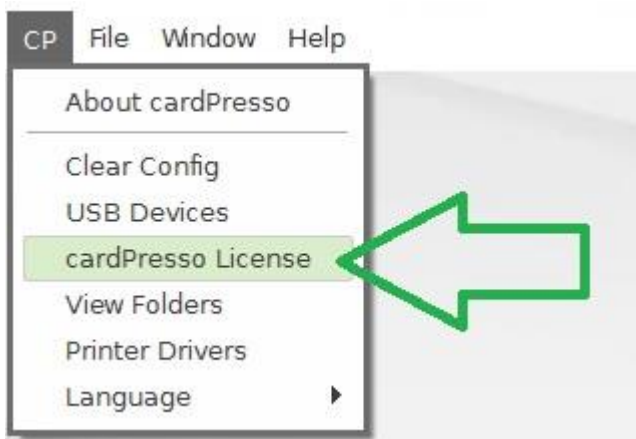
All 16 computers have to be connected to the same Network Scope and Subnet mask, therefore, if the "License Server" is in address "192.168.1.134" the client computers have to belong to the "192.168.1.XXX" scope.

More information on how to install and run the service below:

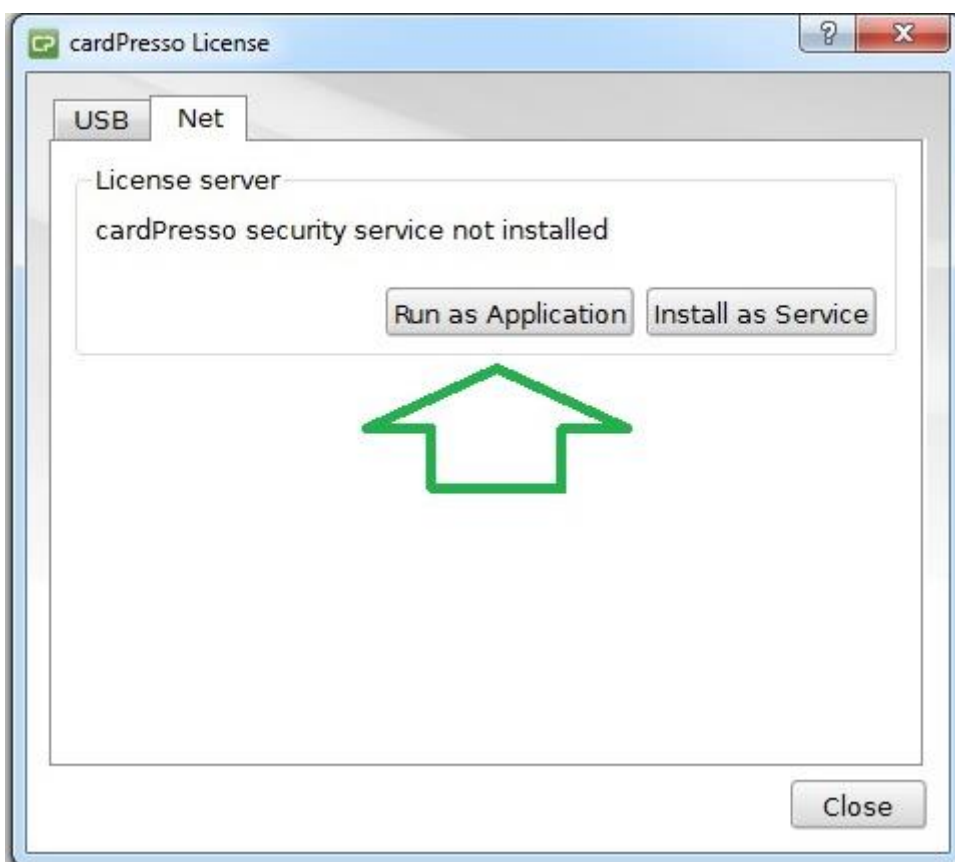
1 - Install cardPresso on the computers but without the service.



2 - In the computer that will run the service (License Server) go to menu **CP** -> **cardPresso License**



3 - In the **Net** tab click on Run as Application:



On Windows systems, a Firewall warning will pop-up, please allow connection to the local network.

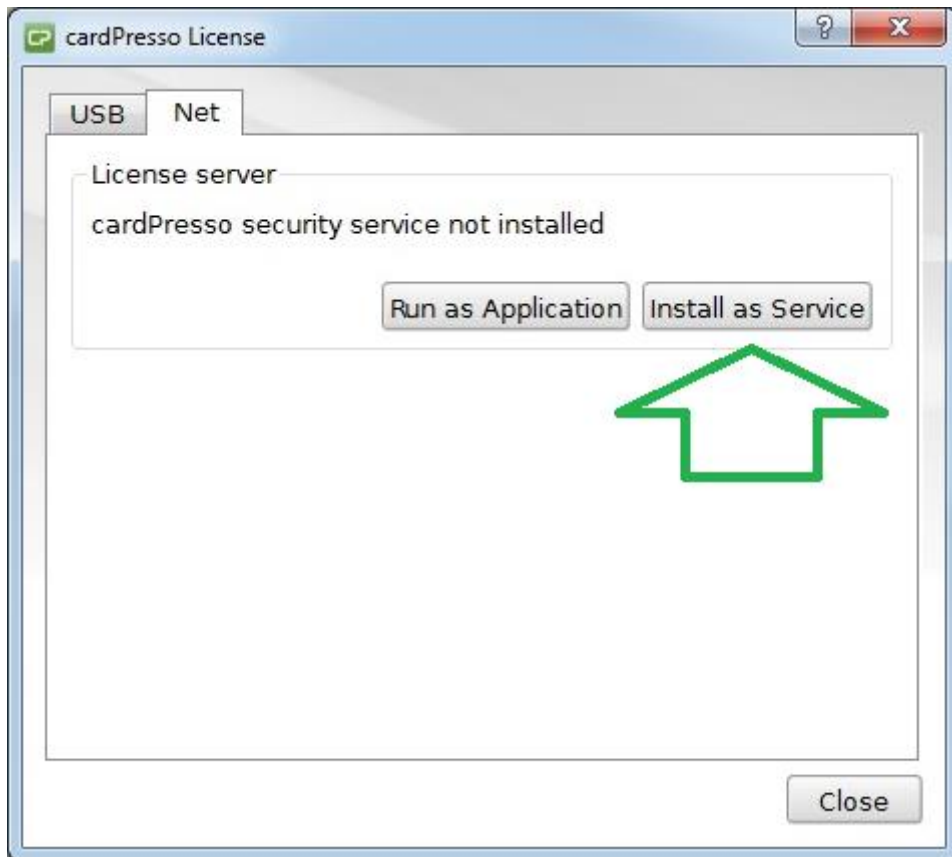
The opened command line window will show you if the ports are open and if a cardPresso application is running in the network.

```
C:\Program Files\cardPresso\cardPressoLS.exe
cardPresso - License Service 1.0.30
(c) cardPresso 2012-2013
securityService::runStart
securityService::connectionsSupervisor
securityService::startListenOnInterfaces
LISTEN : [192.168.2.138]
LISTEN : [10.0.2.15]
securityService::startNetBiosNSOnInterfaces
NETBIOS : [192.168.2.138]
NETBIOS : [10.0.2.15]
NetBios not start:WS Error#10013
securityService::runStart,allStarted
USBnotificationsThread::ENUM.start
USBnotificationsThread::ENUM.enumeratesecurityDevice::addVolumeFiles:F:\security\*.bin,begin
securityDevice::addFile(F:\cardPresso-640)
securityDevice::addVolumeFiles:F:\security\*.bin,terminate
USBnotificationsThread::ENUM.checkNewDeviceFilesUSBnotificationsThread::ENUM.stop
connection accepted:192.168.2.136
epSEC enumerateDevices:
```

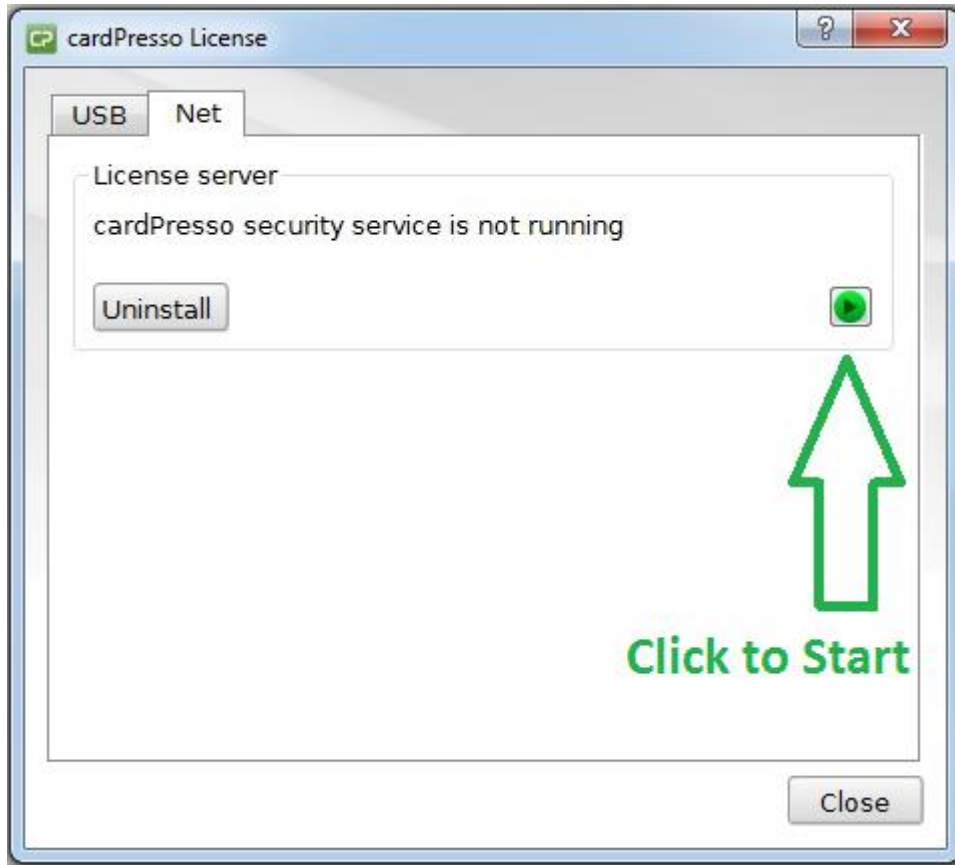
192.168.2.138 is this computer.

192.168.2.136 is a client computer asking where the license is.

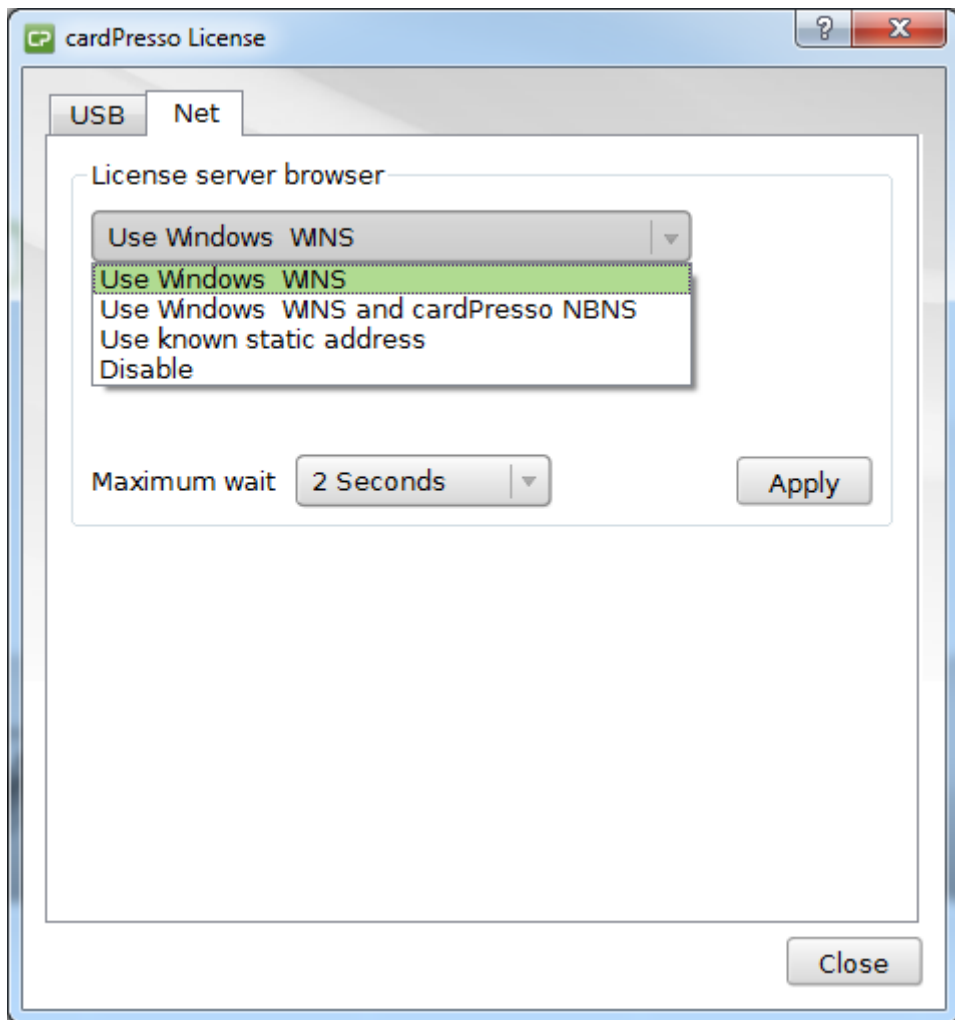
4 - Close the cardPressoLS.exe window and click Install as Service



5 - Run the service and confirm it is running.



In the client computers, use the default configurations or change them based on your network's characteristics:



If cardPresso doesn't automatically detect the license in a Client computer, open a command prompt window (Start Menu -> Run -> cmd.exe), type **ping CARDPRESSO_LS** and hit Enter.

If the host is not found, please confirm that the computers are in the same Local Area Network and, if so, open a port in the firewall for:

CPSECURITY_SERVICENAME "CARDPRESSO_LS"

CPSECURITY_SERVICEPORT 1947

(TCP to communicate and UDP for the name)

Note: The port 1947 is the default port used by cardPresso, in our Technote 98 we provide the steps to change this port to one that is preferred or already "open" in the network.

To test on client if you are receiving the license from Server you can go to, cmd.exe and type "ping cardpresso_ls"

To check if telnet is working properly, on client go to cmd.exe, and type "Telnet", space, and the IP address of Server.

To test on Server side if you are sharing your license, cmd.exe, "netstat -nao -p TCP | find (Service PID || TCP port)", between () you need to type the previously selected port used by cardPresso.

If the ping requests an answer from an IP address that doesn't belong to the Local Area Network and has no answer, retest the ping after rebooting the router and/or use a different router.

Warning: If the License Service is added (Step 3) to multiple computers, a License Service "cluster" is created and it will down the real License Server.

In this case, the ping might answer from the computer where the License Service is installed and running without the USB. Access that computer and remove the Service, using the USB the make the uninstall option available or stop the service and remove it manually.

Also, the Net License uses WINS or NetBios to assign the license to the client computers, therefore the license won't be assigned to a cardPresso application running outside the WINS or NetBios range.